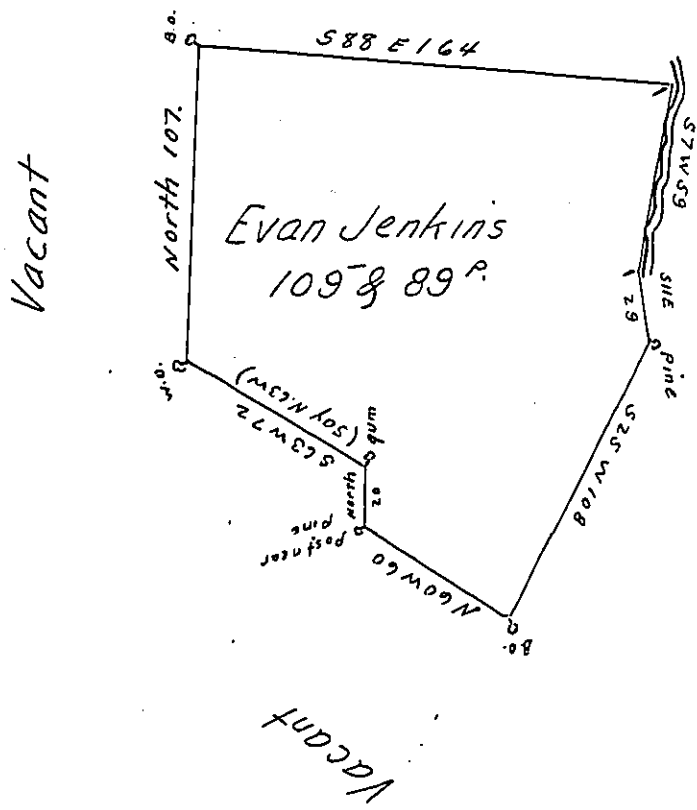


Moses Gordons Land



A Draught of a Tract of Land Situate on the West side of Licking Creek above the Forks in Bethel Township in the County of Bedford. Containing One hundred and Nine Acres and eighty nine perches with the Usual Allowance of six pr. Cent. for Roads &c. Surveyed for Evan Jenkins the 14th Day of April 1786. In pursuance of a Warrant Dated February 18th 1786

To John Lukens Esqr. S.G. George Woods D.S.

IN TESTIMONY that the above is a copy of the original remaining on file in the Department of Internal Affairs of Pennsylvania, made conformably to an Act of Assembly approved the 16th day of February, 1833, I have hereunto set my Hand and caused the Seal of said Department to be affixed at Harrisburg, this eighteenth day of May 1905.

Edward P. ...
 Secretary of Internal Affairs.